



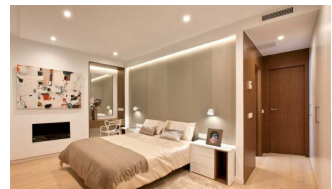
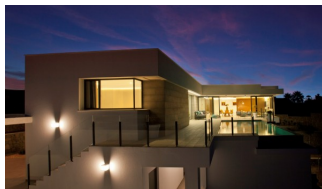
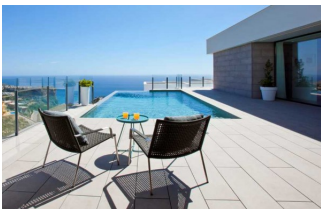
REF: # 6146

BENITACHELL



INFO

PREIS:	985.000 €
TYP EIGENTUM:	Villa
STADT:	Benitachell
SCHLAFZIMMER:	3
BADEZIMMER:	3
GEBAUT (m2):	351
GRUNDSTÜCK (m2):	929
TERRASSE (m2):	-
JAHR:	-
ETAGEN:	-
Nachricht	-



BESCHREIBUNG

The house has been conceived as the union of several open modules and joined by the outside area, creating a fusion between the interior and exterior, obtaining an open, bright and functional housing. Homes of more than 351m² built on plots of 929m² with fantastic sea views and unique sunrises. Distributed in two heights, the upper floor houses a module for the night area, with a large master bedroom with bathroom en suite and two other bedrooms separated by a bathroom that serves both. The day module houses the entrance hall, guest toilet, and the tandem formed by a large living room and kitchen that are integrated or separated, depending on the needs of each moment, through a mobile wall. Both modules converge in the outdoor area with the terrace and infinity pool as protagonists. On the ground floor we find a large space, of more than 68m², destined to a guest apartment, or simply a leisure area, with a private terrace and an independent installation room. With parking space with pergola and storage.

ENERGETIC CERTIFIED



ANSICHTEN

- Panorama
- Meerblick

ENERGETIC CERTIFIED



"OUR EXPERIENCE IS YOUR GUARANTEE"