



REF: # 13337

BENIDORM (PLAYA PONIENTE)



INFO

PREIS: 1.439.000 €

TYP EIGENTUM: Apartment (Penthouse)

STADT: Benidorm (Playa Poniente)

SCHLAFZIMMER: 3

BADEZIMMER: 2

GEBAUT (m2): 137

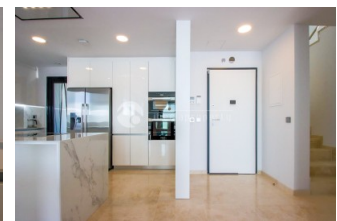
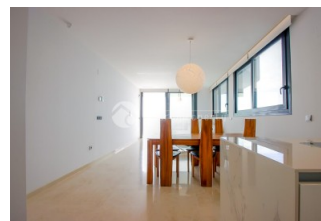
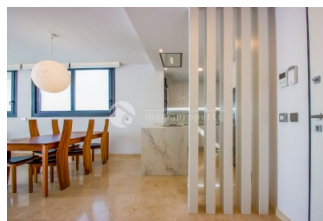
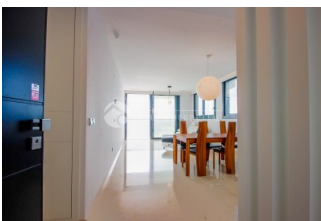
GRUNDSTÜCK (m2): -

TERRASSE (m2): 135

JAHR: -

ETAGEN: 100

Nachricht -



BESCHREIBUNG

Exclusive high-end property in the Poniente area of Benidorm, with only one apartment per floor, ideal for those seeking privacy, spaciousness and spectacular views. The property is distributed as follows: a spacious living-dining room with open-plan kitchen, 3 bedrooms and 2 bathrooms, one of them en suite in the master bedroom. Two of the bedrooms have access to a large balcony on the main floor of the property. An internal staircase leads to a large private solarium terrace, equipped with a jacuzzi and an area prepared to install a summer kitchen, perfect for enjoying the climate and the stunning views. As this is a penthouse, the property enjoys incredible views over the entire beach and the surrounding area. The property also includes two parking spaces and three storage rooms: one on the same floor as the apartment, one next to the parking space and another on the garage level. Its features and fittings include underfloor heating throughout the apartment, electric

shutters, alarm system, video surveillance, marble floors and hot/cold air conditioning. Located in Poniente, Benidorm, it is very close to the beach and all amenities, with the beach only a 5-minute walk away. The residential complex offers excellent communal facilities, including a heated indoor pool, outdoor pool and gym.

ENERGETIC CERTIFIED

energy house

Image type unknown

https://www.viass.de//assets/images/viass/energy/A_

STIL	ANSICHTEN	KLIMAAANLAGE	ENTFERNUNG :
<ul style="list-style-type: none"> • Modern 	<ul style="list-style-type: none"> • Panorama • Meerblick • Bergblick 	<ul style="list-style-type: none"> • Zentral • Wohnraum • Küche • Schlafzimmer 	<p>Strand : 200 m</p> <hr/> <p>Flughafen: 30 Km</p> <hr/> <p>Stadtzentrum : 50 m</p>
ORIENTIERUNG	PARKPLATZ	FLOORING	KÜCHE
Südost	Garage Anzahl Autos : 2	<ul style="list-style-type: none"> • Marmorboden • Steinboden 	<ul style="list-style-type: none"> • Offene Küche • Ausgestattet
GARTENTERRASSEN	HEIZUNG	EXTRA	ENERGETIC CERTIFIED
<ul style="list-style-type: none"> • überdachte Terrasse • offene Terrasse • Aussenbeleuchtung • Tennisplatz • Automatische Bewässerungsanlage • Obstbäume • Palmen • Spielplatz • Natursteinmauern • elektr. Tor • Aussenküche • Grillplatz • Paddletennis • Privater Garten • Gemeinschaftsgarten 	<ul style="list-style-type: none"> • Zentralheizung elektr. • Fussbodenheizung • Fussbodenhz. Bäder 	<ul style="list-style-type: none"> • Aussenwhirlpool • Einbauschränke • Alarm • Stahltür • Doppelverglasung • Satellitenfernsehen • Bewachung • Lagerraum • Waschraum • Fahrstuhl • Internet • Hausmeister 	<p>energy house</p> <p>Image type unknown</p> <p>https://www.viass.de//assets/images/viass/er</p>

"OUR EXPERIENCE IS YOUR GUARANTEE"